



7054.0015

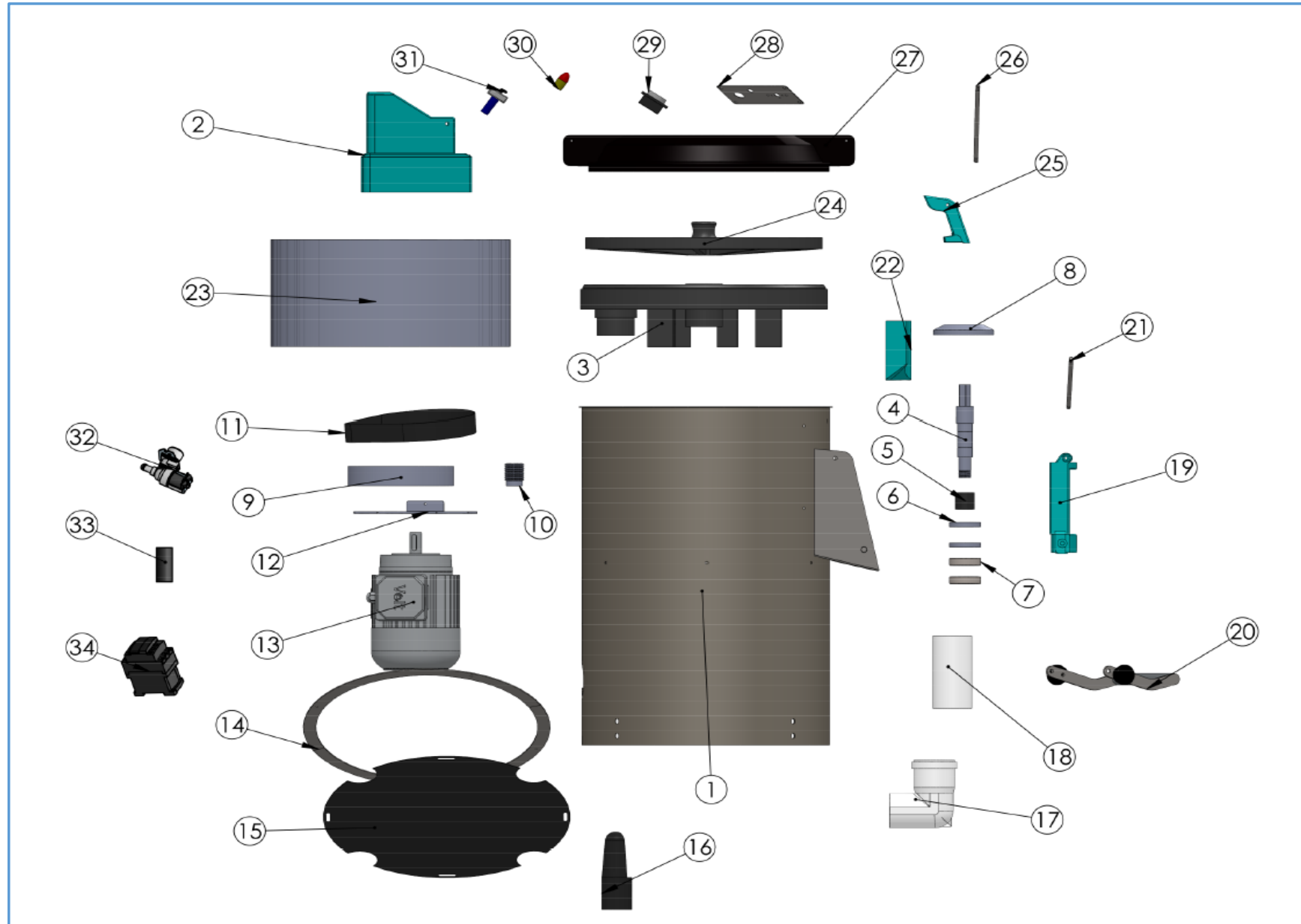
Onderdelen informatie

Erzatzteil information

Spare part information

Information de pièces





Onderdelenlijst 7054.0015

| POS: | Art.No.: | Omschrijving: | Aantal: |
|------|-----------|---------------------------------------|---------|
| 1 | 9370.0540 | BODY 35 kg | 1 |
| 2 | 9370.0205 | ELECTRIC PANEL BOX | 1 |
| 3 | 9370.0380 | TAMBOUR | 1 |
| 4 | 9370.0385 | SHAFT OF TAMBOUR | 1 |
| 5 | 9370.0390 | SPACER (SHAFT OF TAMBOUR) | 1 |
| 6 | 9370.0395 | 34-62 FELT | 2 |
| 7 | 9370.0400 | DIN 625 - 6206 - 12,SI,NC,12_68 | 2 |
| 8 | 9370.0405 | PLASTIC PROTECTOR FOR FELT | 1 |
| 9 | 9370.0410 | BIG PULLEY | 1 |
| 10 | 9370.0415 | PULLEY OF MOTOR | 1 |
| 11 | 9370.0420 | BELT | 1 |
| 12 | 9370.0425 | SHEET OF MOTOR | 1 |
| 13 | 9370.0545 | MOTOR 1,5 KW 1400 rpm 35 KG | 1 |
| 14 | 9370.0435 | BOTTOM CIRCLE (It is welded to body) | 2 |
| 15 | 9370.0440 | BOTTOM CLOSING COVER | 1 |
| 16 | 9370.0275 | FOOT | 4 |
| 17 | 9370.0280 | PIPE BEND | 1 |
| 18 | 9370.0285 | PIPE | 1 |
| 19 | 9370.0290 | PLASTIC FRONT COVER | 1 |
| 20 | 9370.0295 | ARM OF FRONT COVER | 1 |
| 21 | 9370.0300 | SHAFT OF FRONT COVER | 1 |
| 22 | 9370.0305 | DIRECTOR FOR WATER | 1 |
| 23 | 9370.0550 | SIDE EMERY 35 KG | 1 |
| 24 | 9370.0485 | EMERY DISC | 1 |
| 25 | 9370.0330 | LATCH OF TOP COVER | 1 |
| 26 | 9370.0495 | SHATF FOR LATCH OF TOP COVER | 1 |
| 27 | 9370.0500 | TOP COVER | 1 |
| 28 | 9370.0345 | ELECTRIC PANEL LABEL | 1 |
| 29 | 9370.0350 | TIMER | 1 |
| 30 | 9370.0515 | LAMP | 1 |
| 31 | 9370.0335 | ON OFF | 1 |
| 32 | 9370.0355 | WATER INLET VALVE | 1 |
| 33 | 9370.0360 | SWITCH FOR AUTOMATIC STOP | 1 |
| 34 | 9370.0365 | CONTACTOR | 1 |