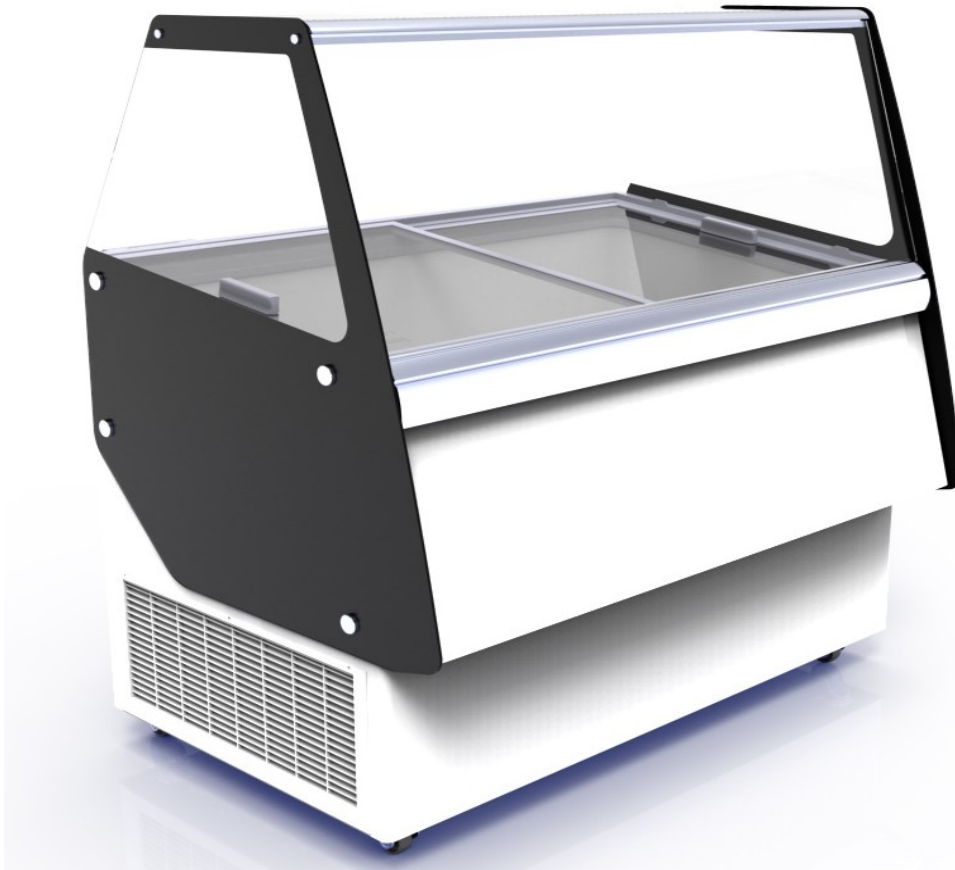


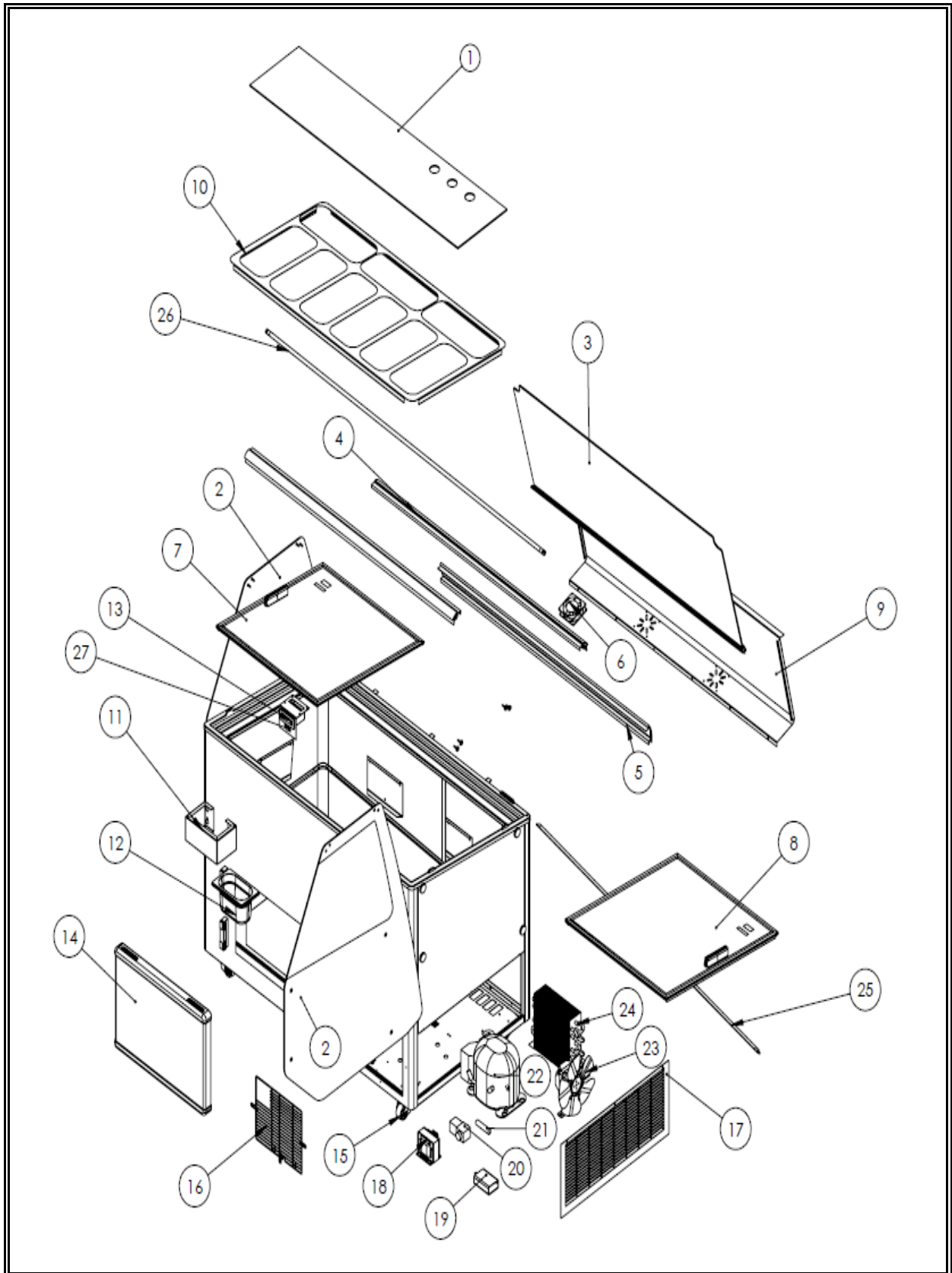


**7472.0140 - 0145**

Onderdelen informatie  
Erzatzteil information  
Spare part information  
Information de pièces







| POS: | Art.No.:  | Omschrijving:                                     | Aantal: |
|------|-----------|---|---------|
| 1A   |           | UPPER GLASS FOR 9                                 | 1 PCS.  |
| 1B   |           | UPPER GLASS FOR 13                                | 1 PCS.  |
| 2A   |           | SIDE SUPERSTRUCTURE GLASS (LEFT) FOR 9/13         | 1 PCS.  |
| 2B   |           | SIDE SUPERSTRUCTURE GLASS (RIGHT) FOR 9/13        | 1 PCS.  |
| 3A   |           | FRONT SUPERSTRUCTURE GLASS FOR 9                  | 1 PCS.  |
| 3B   |           | FRONT SUPERSTRUCTURE GLASS FOR 13                 | 1 PCS.  |
| 4A   |           | ALUMINIUM PROFILE FOR SUPERSTRUCTURE GLASS FOR 9  | 2 PCS.  |
| 4B   |           | ALUMINIUM PROFILE FOR SUPERSTRUCTURE GLASS FOR 13 | 2 PCS.  |
| 5A1  |           | ALUMINIUM PROFILE LOWER FOR FRONT GLASS FOR 9     | 1 PCS.  |
| 5B1  |           | ALUMINIUM PROFILE UPPER FOR FRONT GLASS FOR 13    | 1 PCS.  |
| 5A2  |           | ALUMINIUM PROFILE LOWER FOR FRONT GLASS FOR 9     | 1 PCS.  |
| 5B2  |           | ALUMINIUM PROFILE UPPER FOR FRONT GLASS FOR 13    | 1 PCS.  |
| 6    |           | FAN MOTOR DEHUMIDIFYING                           | 2 PCS.  |
| 7A   |           | SLIDING GLASS BOTTOM FOR 9                        | 1 PCS.  |
| 7B   |           | SLIDING GLASS BOTTOM FOR 13                       | 1 PCS.  |
| 8A   |           | SLIDING GLASS UPPER FOR 9                         | 1 PCS.  |
| 8B   |           | SLIDING GLASS UPPER FOR 13                        | 1 PCS.  |
| 9A   |           | FRONT METAL SHEET COVER FOR 9                     | 1 PCS.  |
| 9B   |           | FRONT METAL SHEET COVER FOR 13                    | 1 PCS.  |
| 10A  |           | STAINLESS STEEL SHEET FOR 9 BASINS                | 1 PCS.  |
| 10B  |           | STAINLESS STEEL SHEET FOR 13 BASINS               | 1 PCS.  |
| 11   |           | BASE FOR SCOOP                                    | 1 PCS.  |
| 12   |           | SCOOP BIN 1/9                                     | 1 PCS.  |
| 13   |           | DIGITAL THERMOSTAT                                | 1 PCS.  |
| 14   |           | STORAGE DOOR                                      | 1 PCS.  |
| 15.1 | 7472.0113 | WHEEL WITH BRAKE                                  | 2 PCS.  |
| 15.2 | 7472.0112 | WHEEL ROTARY                                      | 2 PCS.  |
| 16   |           | SMALL METAL ENGINE GRID                           | 1 PCS.  |
| 17   |           | BIG PLASTIC ENGINE GRID                           | 1 PCS.  |
| 18   |           | DEFROST TRANSFORMER                               | 1 PCS.  |
| -19  |           | LED TRANSFORMER                                   | 1 PCS.  |
| 20   |           | ELECTROMAGNETIC VALVE                             | 1 PCS.  |
| 21   |           | FILTER  | 1 PCS.  |
| 22A  |           | COMPRESSOR FOR 9                                  | 1 PCS.  |
| 22B  |           | COMPRESSOR FOR 13                                 | 1 PCS.  |
| 23   |           | FAN MOTOR   | 1 PCS.  |
| 24A  |           | CONDENSER FOR 9                                   | 1 PCS.  |
| 24B  |           | CONDENSER FOR 13                                  | 1 PCS.  |