



7455.1420 - 7455.1425

Onderdelen informatie

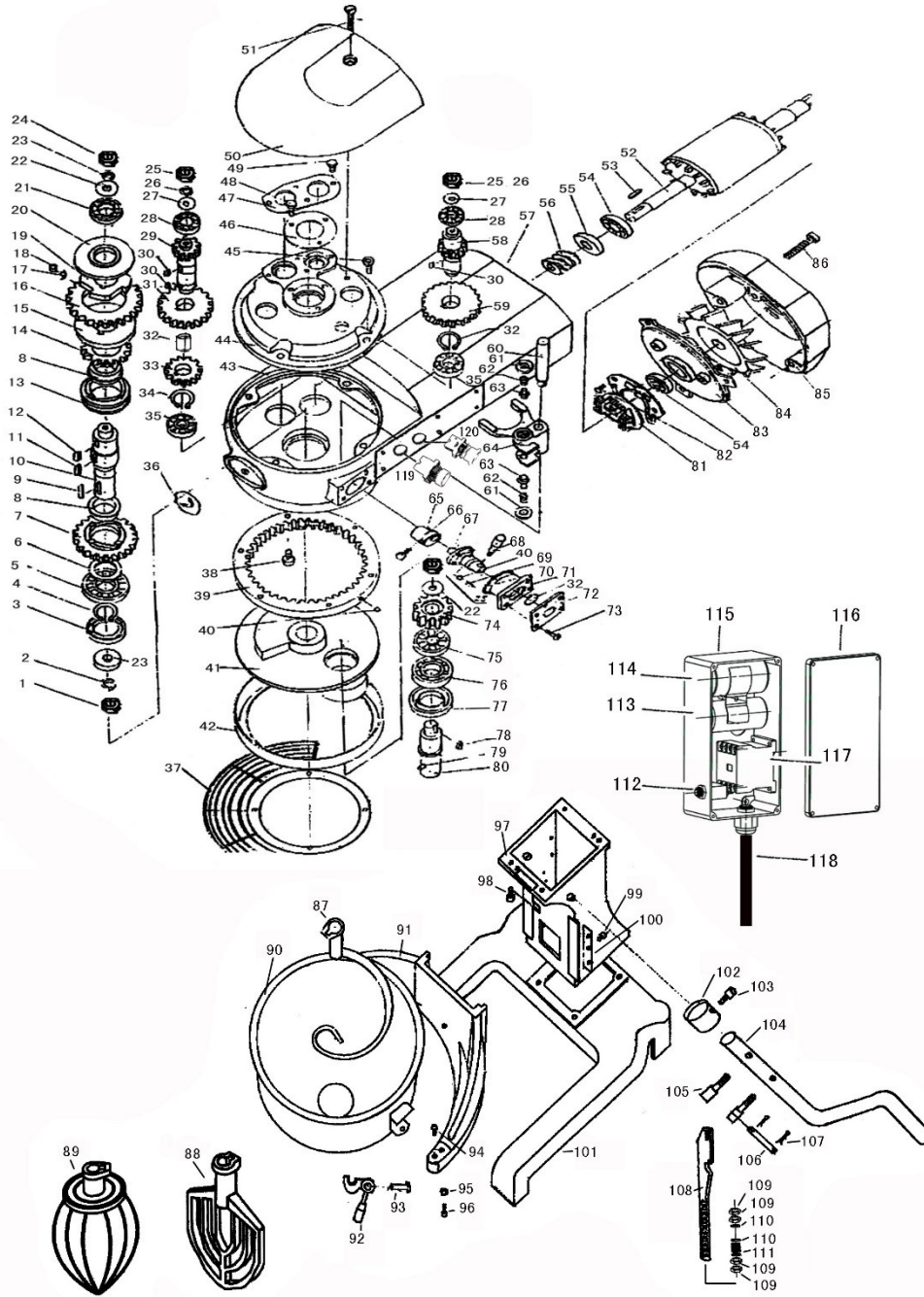
Erzatzteil information

Spare part information

Information de pièces



V. Structure and name of the part 20K/30K



7455.1420 / 7455.1425 Planetary Mixer Spare Parts

serial No.	name	serial No.	name	serial No.	name
1	nut	41	shifting seat	81	centrifugal starter
2	spring washer	42	oil ring	82	button head screw
3	Skeleton oil seal	43	case	83	back axle bearing seat
4	axis with snap spring	44	axle bearing seat cover	84	fan blade
5	bearing	45	socket head screw	85	back air hood
6	Bearing on the next set of	46	pressure plate	86	socket head screw
7	clutch gear up	47	pressure plate	87	dough mixer
8	output shaft gear sets	48	socket head screw	88	agitator
9	flat key	49	button head screw	89	egg beater
10	output shaft	50	cap	90	charging basket
11	flat key	51	rotor	91	rack
12	flat key	52	rotor	92	pressing handle
13	output shaft clutch	53	flat key	93	pressing handle inner jacket
14	clutch gear up	54	bearing	94	charging basket locating pin
15	Ratchet plate(up)	55	ring seal	95	spring washer
16	Outer Ring	56	head worm bar	96	socket head screw
17	Roller Spring	57	stator	97	pier
18	Roller	58	worm shaft 15 teeth	98	hexagon screw
19	Inside the star wheels	59	worm gear 23 teeth	99	hexagon bolt
20	Ratchet plate(under)	60	guide shaft	100	pressure plate
21	bearing	61	shifting fork blind nut	101	foot
22	flat pad	62	shifting fork spring	102	fixed sleeve
23	spring washer	63	shifting fork small shaft	103	socket head screw
24	nut	64	shifting fork	104	joystick
25	nut	65	Eccentric Shaft	105	lifter screw
26	spring washer	66	screw	106	pin bolt
27	Plain washer	67	variable-speed shaft	107	cotter pin
28	bearing	68	gear handle	108	Lift rod
29	Between the bridge axis	69	locating spring	109	nut
30	flat key	70	ring seal	110	Increase the flat pad
31	Intermediate shaft gear(big)	71	gear shifting seat	111	Compression spring
32	Axial length between sets of	72	indicator		
33	Intermediate shaft gear(small)	73	button head screw		
34	Shaft ring	74	planet gear 20 teeth		
35	bearing	75	ball bearing		
36	front name plate	76	ball bearing		
37	net hood	77	oil seal		
38	socket head screw	78	flat key		
39	internal gear	79	taper bolt		
40	internal the hexagon screw	80	agitating shaft		