



Spare part information

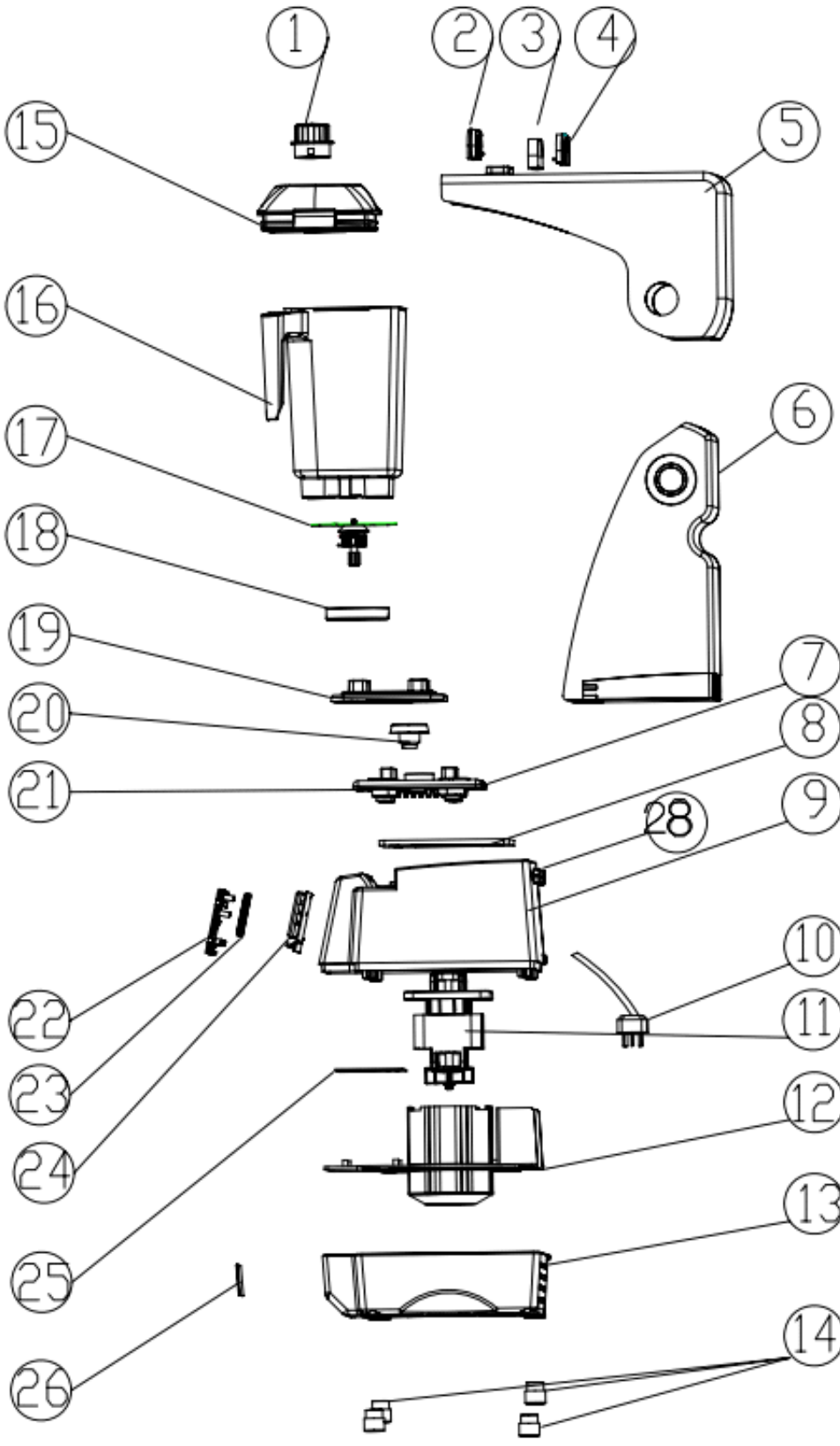
7455.0300



CombiSteel

7455.0300







Spare part list 7455.0300

POS:	Art.No.:	Omschrijving:	Aantal:
1	9339.0713	Small Cap	1
2		B Hand Cover	1
3		O Hand Cover	1
4		T Hand Cover	1
5	9339.0732	NF Cover	1
6	9339.0732	NB Cover	1
7		Motor Flame	1
8		Motor Cushion	1
9		Top Board	1
10		Wire	1
11	9339.0714	Motor	1
12		Motor Cover	1
13		Low Board	1
14	9339.0752	Foot	1
15	9339.0713	Cup Cap	1
16	9339.0712	Cup (bevat No: 1+15+16+17+18)	1
17	9339.0724	Blade ASM	1
18	9339.0736	Cup Base	1
19		Cup Pad	1
20	See Photos	Clutch	1
21		Motor Flame	1
22		Bracket	1
23		Screen Cover	1
24	9339.0716	Controle PCB	1
25	9339.0718	Power PCB	1
26		KPS Marking	1
A	9339.0734	Screw Cover	1
17A	9339.0726	Metal Drive Socket	1
17B	9339.0728	Metal Drive Socket	1
B	9339.0718	Print Display	1
.		## = Parts cannot be ordered separately.	
.		** = No article number known, must be requested specifically.	

Photo Spare Parts



9339.0726



9339.0728



9339.0708



9339.0742



9339.0712



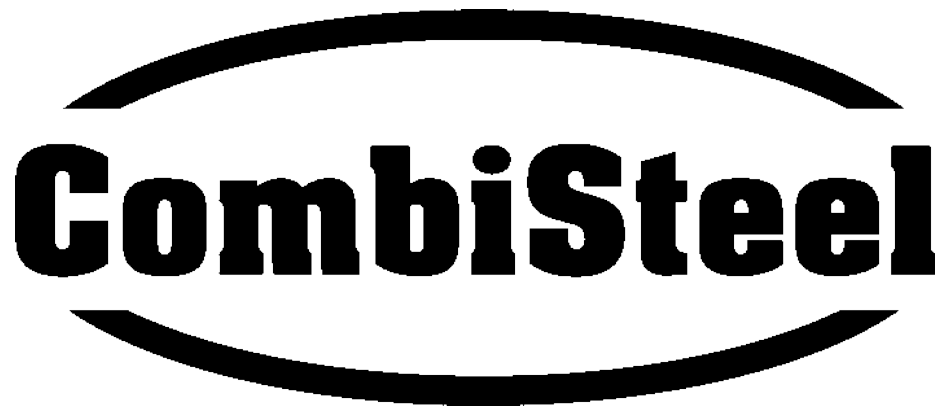
9339.0724



9339.0734



9339.0736



7455.0300

Combisteel BV

Lightschip 63
3991CP Houten
The Netherlands

+31 (0)30 285 00 90
info@combisteel.com
www.combisteel.com