



**7450.0081**

Onderdelen informatie

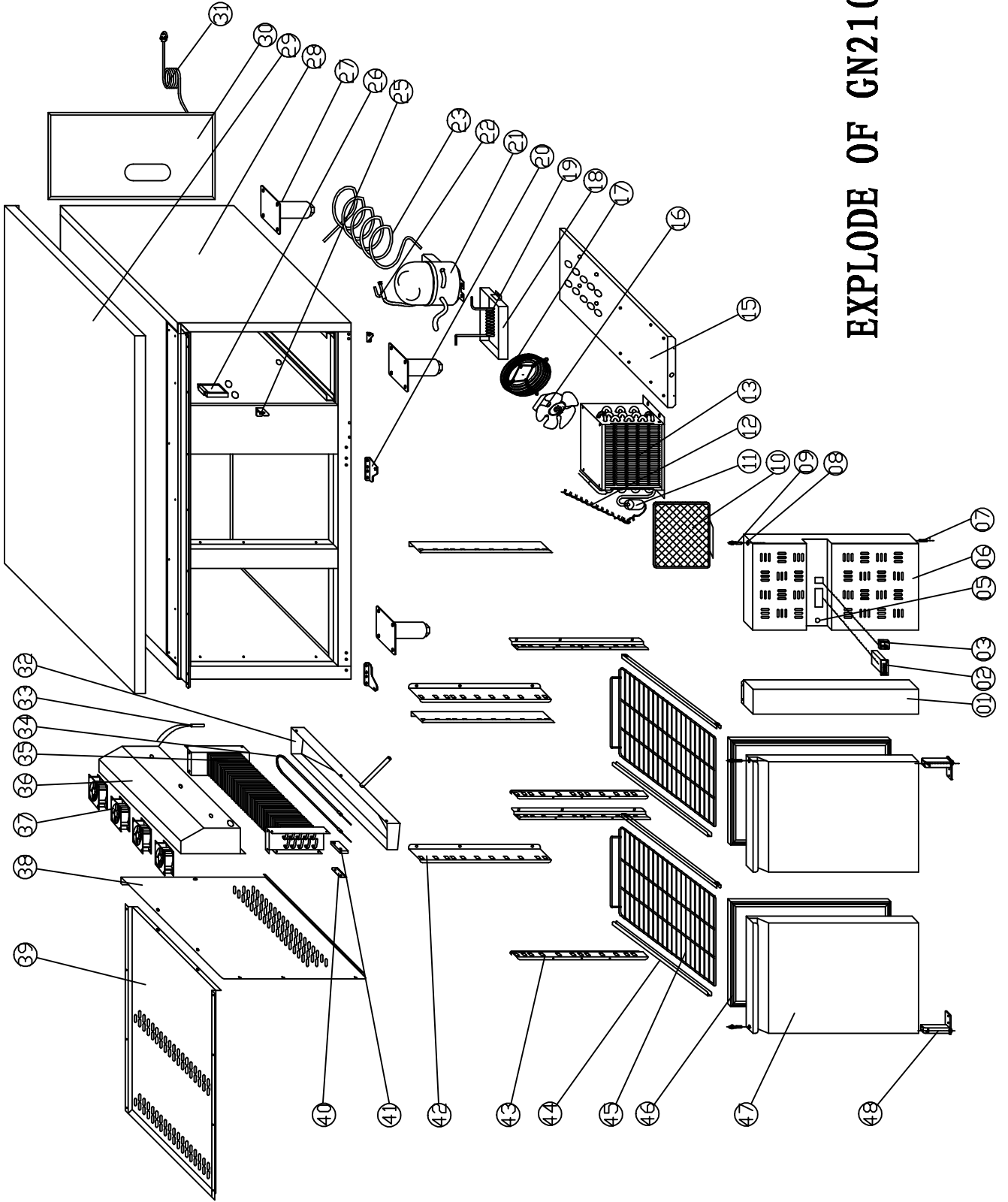
Erzatsteil information

Spare part information

Information de pièces



# EXPLODE OF GN2100BT



# SPARE PARTS LIST OF 7450.0081

GN210081 2015

NO.	CODE	NAME	MODEL	QUY.	MATERIAL	REMARK
1		FIXED FRONT PANEL	95×646×50	1PC	STAINLESS	
2	9390.1905	THERMOSTAT	XR60C	1PC		
3	9108.0244	MAIN SWITCH	DRH-2415-3	1PC		
5	9338.0300	LOCK		1PC		
6		FRONT PANEL		1PC	STAINLESS	
7	9338.0670	HINGE AXIS	Φ7×24/M5	4PCS	STAINLESS	
8	9338.0295	BUSHING	Φ7	4PCS	PLASTIC	
10	9338.0650	FILTER		1PC		
11		FILTER DRIER	25g	1PC	XH-9	
12		CAPILLARY	Φ1.15×3000	1PC	COPPER	
13	9338.0780	CONDENSER	1/4HP	1PC		
15		UNIT BOARD		1PC	ZINC	
16	9999.0136	CODENSER FAN	BD01-01/Φ200	1PC		
17		BASKET GUARD GRILLS		1PC	COATER STEEL	
18		WATER BOX		1PC	STAINLESS	
19		EVAPORATE PIPE	Φ6×0.75	1PC	COPPER	
20		DOWN HINGE LEFT/RIGHT		1PAIR	STAINLESS	
21	9338.0320	COMPRESSOR	J2178GK	1PC		
23		SUCTION PIPE	Φ8×0.6	1PC	COPPER	
24		FRONT PANEL HINGE		1PC	STAINLESS	
25		LOCK HOOK		1 PCS	ZINC	
26		JUNCTION BOX		2PCS		
27	4627.052	FEET		150 4PCS		
28		BODY		1PC		
29		TOP		1PC	FOAMED STAINLESS	
30		UNIT ROOM COVER		1PC	ZINC	
31		PLUG	LT312/1.5MM2×3G	1PC		
32		EVAPORATOR WATER PAN(WITH HEATING ELEMENT)		1PC	STAINLESS	
33	9338.1460	PROTECTOR FOR HEATING ELEMENT	10A/65°C	1PC		
34	9338.0190	DEFROST HEATING ELEMENT		1PC		
35	9338.0620	EVAPORATOR		1PC		
36		FAN SUPPORT		1PC		
37		CIRCUIT FAN		9238 4CS		
38		EVAPORATOR COVER	548×543×42	1PC	STAINLESS	
39		AIR FLOW CONDUCT BOARD		1PC	STAINLESS	
40	9388.1612	SENSOR FIXED CLIP		1PC	STAINLESS	
41	9338.1502	PROBE PADDING		1PC	STAINLESS	
42		BACK SUPPORT LEFT/RIGHT		4PAIRS	STAINLESS	
43		FRONT SUPPORT LEFT/RIGHT		4PAIRS	STAINLESS	
44	4627.010	GUID/LEFT/RIGHT		2PAIRS	STAINLESS	
45	4627.005	SHELF	GN1/1	2PCS		
46	9338.0095	GASKET		2PCS	PLASTIC	
47	9338.0955	DOOR LEFT/RIGHT		2PCS		
48	9635.0150	DOOR SPRING		2PCS		