



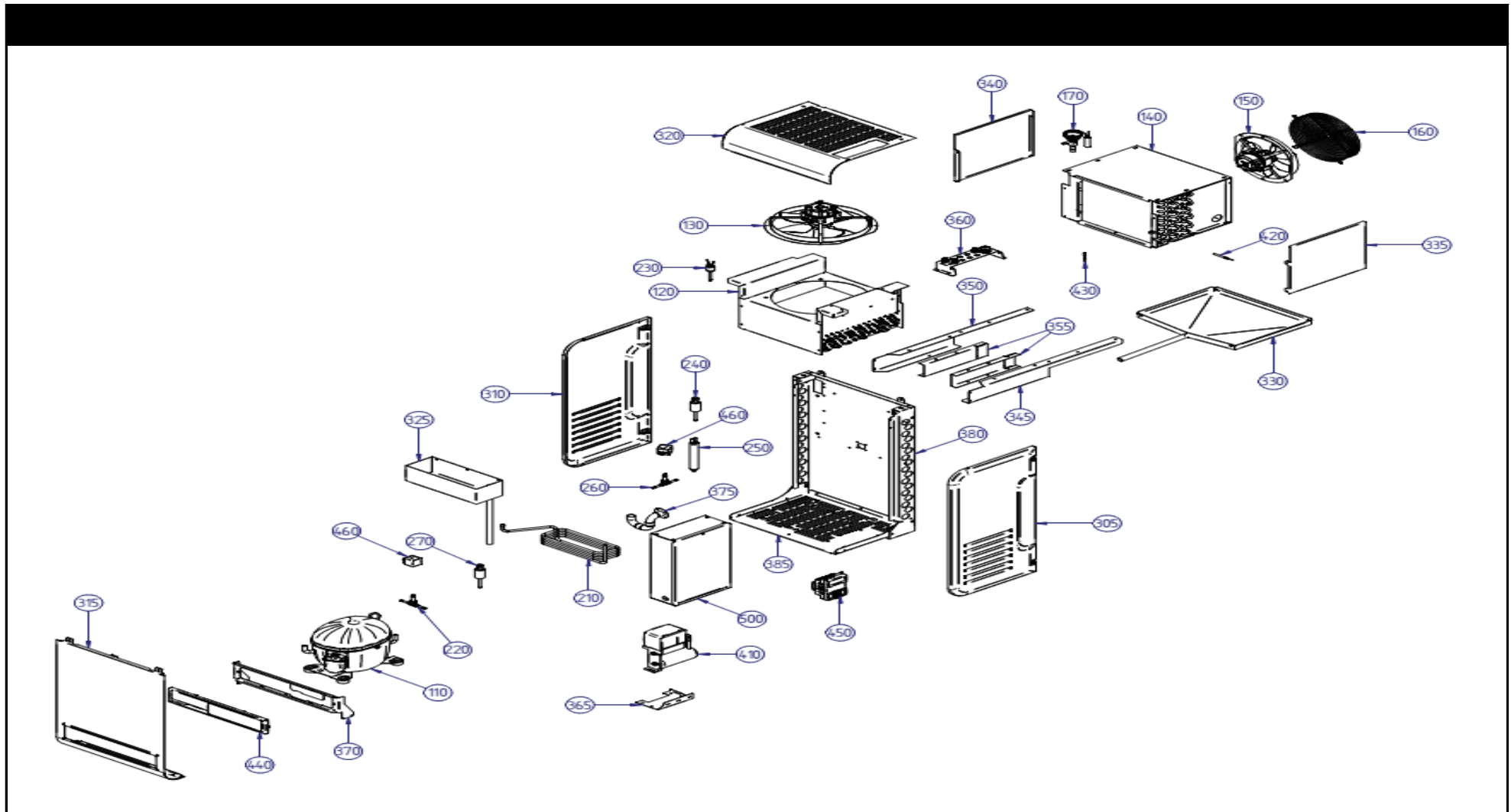
7265.0005

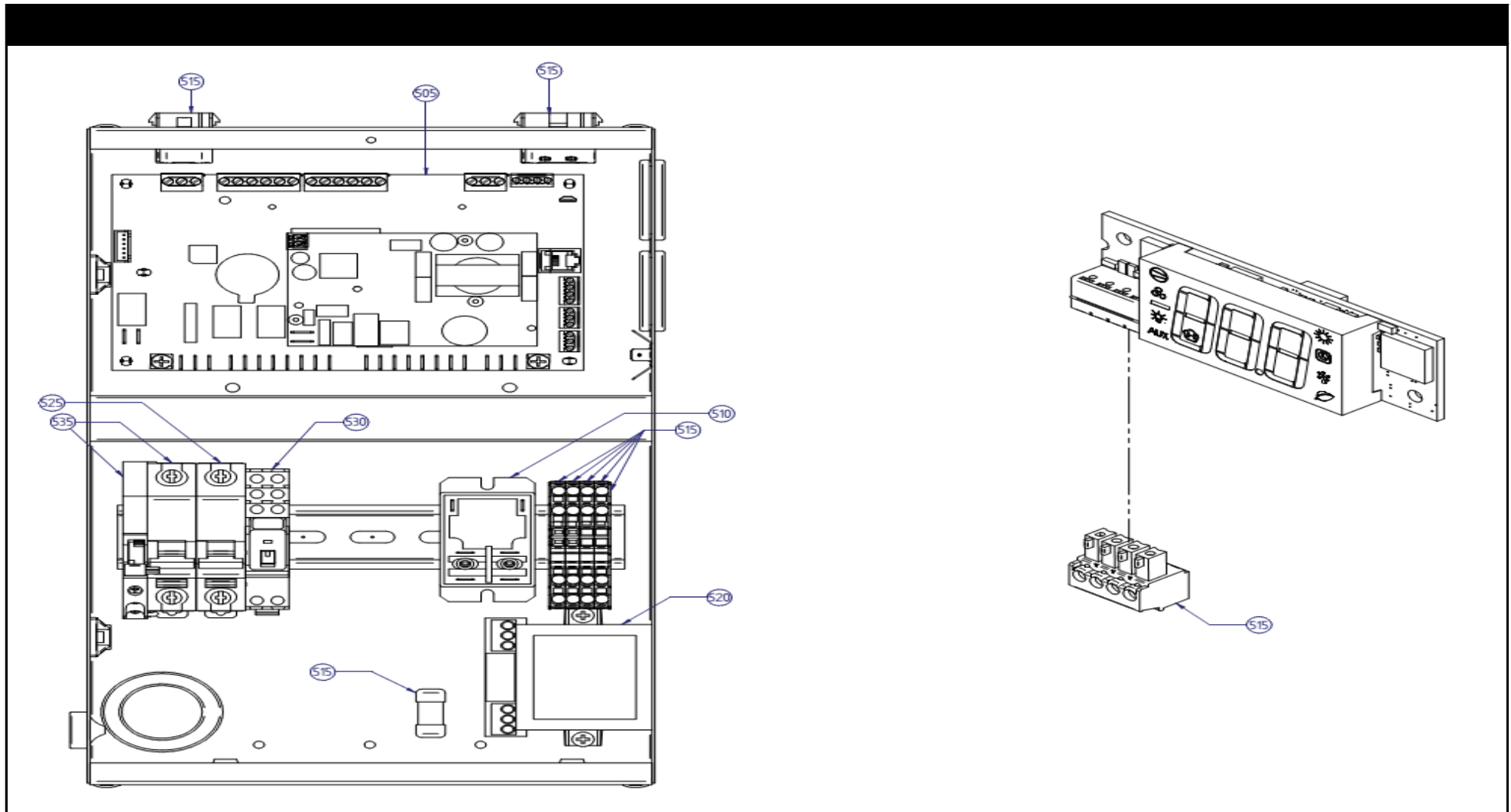
R290

Onderdelen informatie
Erzatzteil information
Spare part information
Information de pièces









POS:	Art.No.:	Omschrijving:	Aantal:
110		COMPRESSOR	
120		CONDENSER	
130	9296.0050	CONDESER FAN GROUP	
140		EVAPORATOR	
150	9296.0040	EVAPORATOR FAN GROUP	
160		EVAPORATOR FAN GRID	
170		THERMOSTATIC EXPANSION VALVE	
210		CONDENSATE DRYER	
220		HOT GAS SOLENOID VALVE	
230		PRESSURE SWITCH	
240		HIGH PRESSURE PROBE 0-30 bar	
250		FILTER	
260		LIQUID LINE SOLENOID VALVE	

POS:	Art.No.:	Omschrijving:	Aantal:
270		LOW PRESSURE PROBE 0-10 bar	
305		DX PANEL	
310		SX PANEL	
315		FRONTAL PANEL	
320		SUPERIOR PANEL	
325		CONDENSATE TRAY	
330		EVAPORATOR TRAY	
335		DX EVAPORATOR PANEL	
340		SX EVAPORATOR PANEL	
345		DX EVAPORATOR BRACKET	
350		SX EVAPORATOR BRACKET	
355		PROTECTOR BRACKET	
360		CABLE GLANDS BRACKET	

POS:	Art.No.:	Omschrijving:	Aantal:
365		ELECTRICAL BOX BRACKET	
370		DISPLAY BRACKET	
375		SYPHON SET	
380		BACK STRUCTURE	
385		BASE	
410		COMPRESSOR ELECTRICAL BOX	
420		DEFROSTING PROBE	
430	9296.0010	COLD ROOM TEMPERATURE PROBE	
440		KIT DISPLAY	
450		GATE WAY	
460		SOLENOID COIL	
500		ELECTRICAL BOX	
505		ELECTRONIC BOARD	

POS:	Art.No.:	Omschrijving:	Aantal:
510		COMPRESSOR RELAY	
515		MATERIALE CONSUMO	
520		POWER TRANSFORMER	
525		MAGNETOTHERMIC SWITCH FOR SECONDARY LOAD	
530		PRESSURE SWITCH RELAY + SOCKET	
535		COMPRESSOR MAGNETOTHERMAL	